

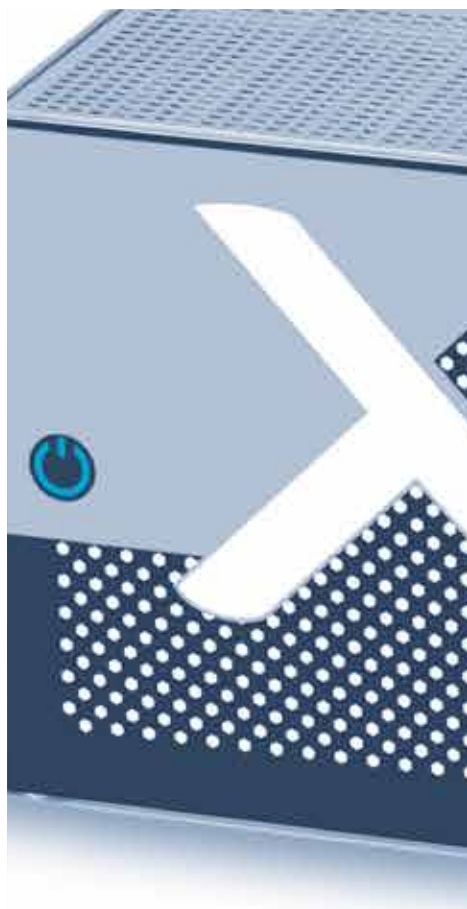
Audio, video and  
communications  
for broadcasters



TECHNICAL

SOLUTIONS FOR

**RADIO**



## INDEX

03

### PRESENTATION

Company profile and lines of business.

04

### AUDIO CONSOLES

Digital mixing consoles for Radio and Television production.

09

### COMMENTARY SYSTEMS

Commentary Audio Equipment for Outside Broadcasting.

10

### IP AUDIO ROUTING

AoIP interfaces and matrices for audio distribution.

12

### AUDIO CODECS

Communications equipment for STL, broadcast networks and remotes.

17

### ON-AIR TELEPHONY

SIP based VoIP and classic telephone systems for talk-shows.

18

### VISUAL RADIO

Automated video production systems for radio studios.

19

### BROADCAST AUTOMATION

Audio Automation Systems for play-out, production, recording and editing.



## **PRESENTATION**

### **OUR COMPANY**

For more than 40 years AEQ has been developing, manufacturing and selling audio and video equipment for broadcast communications, production and automation systems for Radio, Television and other media with the brand name AEQ.

### **EQUIPMENT DEVELOPMENT AND MANUFACTURING**

A strong R&D team is the heart of our activity. We create and implement our own technology in our equipment, primarily designed for the broadcast market. We develop professional audio and video solutions for radio, television and other media.

### **SALES AND SUPPORT**

Our equipment is sold worldwide through a network of distributors that provide local technical and commercial support to users. Also, through our headquarters and our own offices, we provide direct technical and commercial support anywhere in the world. More than 5500 radio studios in 100 countries are currently operating AEQ equipment.

### **KEY FACILITIES FOR RADIO AND TV**

From AEQ we offer 'turnkey' solutions. We provide services for engineering, installation and setup, commissioning and user training for installations of any size. All this is accomplished in close collaboration with our dealers, final customers and, if required, third party manufacturers.



A complete range of radio mixing consoles places AEQ in a prominent place on the world market in regards to design and manufacturing of such products. IP connectivity with DANTE™ / AES67 protocol makes installation and use simple and flexible.

## Atrium

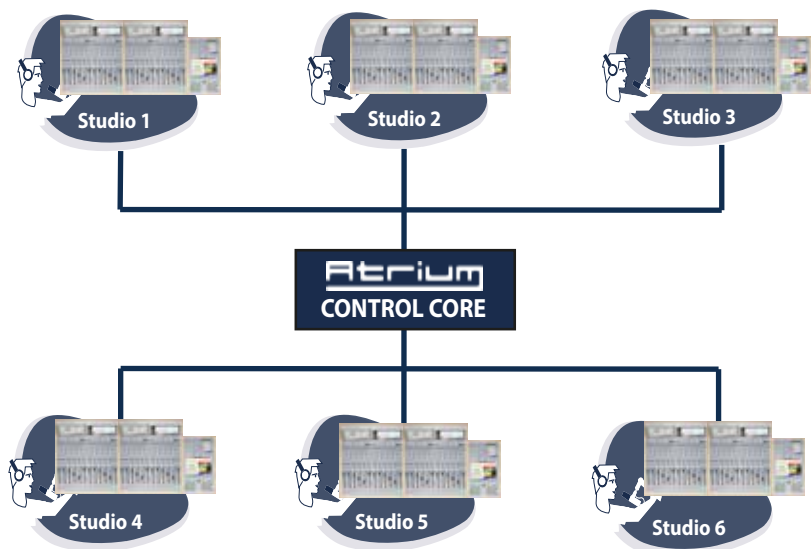
### Modular audio digital console with AoIP connectivity up to more than 1000 channels and 96 faders that can be set up on individual channel setting pages

The Atrium console is based on a control surface independent of the process and audio engine or engines. Up to 6 Atrium consoles can drive and be driven from a single engine. This means that a single Engine can service 6 on the AoIP network. A surface can also work with several engines, and control other AEQ AoIP products integrated with the system.

The control surface is modular and counter flush-mount. Each module holds 6 faders and it is possible to install up to a maximum of 96 fader channels. Each control surface is complemented with a powerful control and monitoring module.

Atrium features a powerful set of touch screens, encoders, indicators and programmable keys. This avoids unnecessary steps and procedures in the console workflow, always keeping accurate information at sight, making operation simple and safe.

The control surface is fully configurable: for classic workflows, such as A / B selection on each channel, input and output or N-1/multiplex channels - or mixed workflows, with a totally flexible programming of the different keys.



### Scenarios of use

- Radio broadcast and production studios.
- TV Sound production.
- Recording and PA.
- OB Vans.



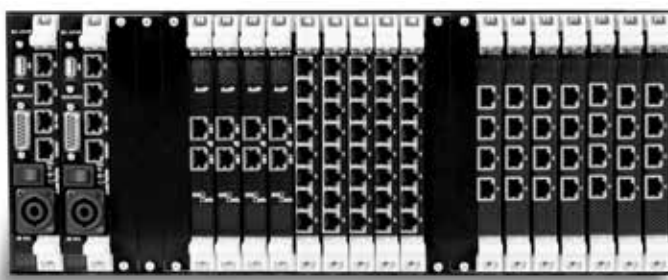


# Atrium

The ATRIUM console incorporates the specific features for ON AIR broadcasting: automatic monitor mute, cough mute, fader start, control signalling etc. In addition, it incorporates programmable keys to control external equipment: communications, intercom, visual radio...

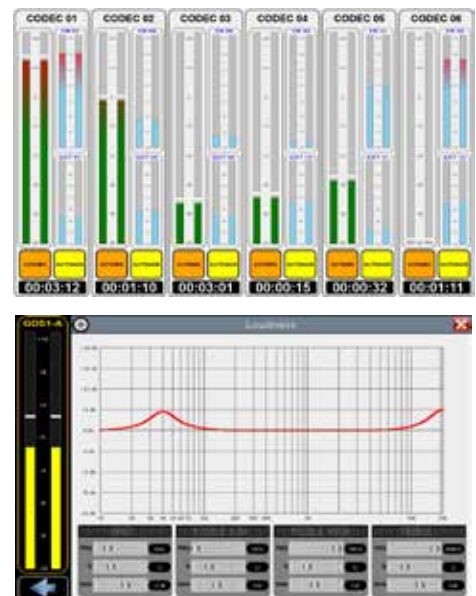
Multi-channel audio connectivity for AoIP Networks and MADI Links.

**X\_CORE** is the process and inputs and outputs engine of ATRIUM. It is completely modular core/engine and physically separate from the control surface. It is in charge of all the functions for mixing, routing, setting and processing of dynamics, equalization, filters, delay and reverb, among others. Several X\_CORE can work together in larger installations.



The channels have individual vu-meters, 100 mm motorized faders, color display and 8 programmable keys. As an option, a touch screen can be added for each 6-channel module. On that screen the vumeters are also represented and the processes can be set and adjusted. Each module handles 8 pages or configuration layers.

The control and monitoring module has a touch screen and 24 programmable and contextual keys. It also incorporates VU-meters, CUE speaker and control and studio sections. You can add an additional touch screen, with loudness measurement.



## Inputs and Outputs:

Modular engine based on a 4 UR frame, expandable through additional frames. Each frame can be equipped with redundant controllers and power supplies, 20 process cards, and 21 I/O boards for different formats:

- Frame to Frame Link module, 1,024 audio channels.
- AoIP 64-channel audio connection card based on Dante™-AES67 standard.
- MADI-AES10 Link, multi-channel audio module with 2x64 channels.
- 8 balanced analog input/output module.
- 4 AES / EBU stereo digital input/output module.
- Module with 4 microphone inputs and 2 headphone outputs.



## Forum IP SPLIT



Modular audio digital console, with AoIP connectivity and with more than 180 I/O channels and 24 faders

### Scenarios of use:

- Radio broadcast and production studios.
- TV Sound production.
- OB Vans.

#### Inputs and outputs:

The modular engine incorporates mic./line input for talkback and self-control, monitor and headphone outputs for control and studio, as well as stereo CUE output. As an option you can incorporate 64 MADI-AES10 inputs / outputs (incompatible with AoIP Dante™-AES67) and redundant power supplies.

It also supports up to 14 cards to configure inputs and outputs flexibly, of the following types:

- 4 AES / EBU stereo digital inputs/outputs configurable as SPDIF.
- 2 configurable phantom power microphone / mono line inputs.
- 8 analog line inputs (individually configurable in stereo pairs, 4 pairs).
- 8 analog line outputs (individually configurable in stereo pairs, 4 pairs).
- 32 AoIP Dante™-AES67 inputs / outputs (individually configurable in stereo pairs, 16 pairs).
- 4 USB digital stereo inputs / outputs.
- Digital telephone hybrid.

- Modular, flush-mount control surface, 4 to 24 channels with 4 direct routing keys per channel.
- Independent, modular engine for process, inputs and outputs, with mixing, dynamics, equalization and filters functions.
- It incorporates the specific features for ON AIR Broadcast production: automatic monitor mute, cough mute, fader-start, control signalling, etc.
- Programmable keys for external equipment control: communications, intercom, visual radio ...
- Option for multi-channel connectivity to AoIP Networks or MADI Links.
- Optional integrated telephone hybrids.
- Software application option that enables control and monitoring with a touch screen.
- Available software control surface replica for remote operation.
- Wiring kit.





## Forum LITE

Up to 92 channels or more, and 12 faders

It's the affordable combination between the 12 faders Forum SPLIT surface with a compact engine.

Same features as Forum IP SPLIT, with a more limited capacity of faders, inputs and outputs.



### Inputs:

- 4 mono mic / line inputs, configurable phantom power.
- 2 stereo USB digital inputs (I / O).
- 4 AES / EBU stereo digital inputs, configurable as SPDIF.
- 12 analog inputs (individually configurable in stereo pairs, 6 pairs).
- 16 optional AoIP DANTE-AES67 inputs (individually configurable in stereo pairs, 8 pairs).
- 2 inputs for telephone line.
- 64 optional MADI-AES10 inputs (32 ST pairs).

### Outputs:

- 2 USB stereo digital outputs (they are I / O).
- 4 AES / EBU stereo digital outputs configurable as SPDIF.
- 8 analog outputs (individually configurable in ST pairs, 4 pairs, or 3 pairs and secondary headphones).
- 16 optional AoIP DANTE-AES67 outputs (individually configurable in stereo pairs, 8 pairs).
- 2 outputs for telephone line.
- 64 optional MADI-AES10 outputs (32 ST pairs).
- Monitor and headphone outputs for control and studio.
- Stereo CUE.



# Capitol IP



Ultra compact audio digital console, with AoIP connectivity, up to 92 channels and 8 faders

- Flush-mount or embedded control surface with 8 channels and 2 direct routing keys per channel.
- Built-in motor process, independent inputs and outputs engine, with mixing, dynamics, equalization and filters functions. Optionally with redundant power supply.
- Incorporates specific features for ON AIR broadcast features: automatic monitor cutting, cough cutting, fader start, signaling control.
- Programmable keys for external equipment control: communications, intercom, visual radio...
- Option of multichannel connectivity by IP or MADI (not simultaneously).
- Software application option that facilitates control and monitoring with a touch screen
- Available control surface replication software for remote operation.
- Optional double telephone hybrid.
- XLR or RCA wiring kit, on demand.

## Scenarios of use:

- Broadcast/Production radio stations/studios.
- High-level journalist booths.
- Sound Production on TV.
- OB Vans



### Inputs:

- 4 mic / line mono inputs, configurable phantom power.
- 2 stereo USB digital inputs (I / O).
- 4 AES / EBU stereo digital inputs configurable as SPDIF.
- 12 analog inputs (individually configurable in stereo pairs, 6 pairs).
- 16 optional AoIP Dante™-AES 67 inputs (individually configurable in stereo pairs, 8 pairs).
- 2 inputs for telephone line.
- 64 optional MADI-AES10 inputs (32 stereo pairs).

### Outputs:

- 2 USB stereo digital outputs (they are I / O).
- 4 AES / EBU stereo digital outputs configurable as SPDIF.
- 8 analog outputs (individually configurable in ST pairs, 4 pairs, or 3 pairs and secondary headphones).
- 16 optional AoIP Dante™-AES 67 outputs (individually configurable in stereo pairs, 8 pairs).
- 2 outputs for telephone line.
- 64 optional MADI-AES10 outputs (32 stereo pairs).
- Monitor and headphone outputs for control and studio.
- Stereo CUE.





# Olympia 3



## Commentary unit with AoIP connectivity for three users with robust and functional design

With PoE, Video over IP transport, process and local mixing, it incorporates an intercom user panel. It's controlled by software and does not need a specific matrix for its local and remote connection. Any device with AoIP Dante™ - AES 67 connectivity can share incoming or outgoing audio with Olympia 3. Ideal to work in pairs with audiocoders Venus 3.



For us it's a pride to announce that AEQ is present in the generation and transmission of all the audio signals for radio and TV stations of the world, in major sporting events, such as the last Olympic Games, world and continental championships in athletics, football, basketball, cycling, swimming, handball, hockey, skiing, Formula 1 GP, as well as mobile and fixed systems in large sports stadiums.

### Scenarios of use:

In addition to its use in large sporting events, it also has utility for radio stations. It can be used in journalist booths, in simultaneous translation sets and "off tube" booths to comment events in radio studios, in mobile units, and also in small deployments for the individual retransmission of an event of any kind.



A full range of digital interfaces and routers, puts AEQ in a prominent place in the design and manufacture of IP audio systems for radio and television stations. IP connectivity according to AES 67 - DANTE™ standard makes simple an flexible the installation and use of the devices.

## Netbox 32 AD/ 8 AD/ 4MH



### Analog and digital audio interfaces to the IP network



#### NETBOX 32 AD

Connect the audio network over IP up to 32 input and 32 output channels, divided into 16 mono analog and 8 stereo digital. Stereo digital can be configured as AES / EBU or SPDIF. It also incorporates 16 GPIs and 16 GPOs.

##### Scenarios

Especially suitable for master control rooms and dispatch rooms, or to expand or relocate matrices on TDM BUS type X\_CORE or Netbox DSP.

#### NETBOX 8 AD

Grants access to the IP audio network up to 8 input and 8 output channels, spread over 4 mono analogue connections and 2 stereo digital connections. Stereo digital can be configured as AES / EBU or SPDIF. The second digital stereo can also be switched to a USB connector. It also incorporates 4 GPIs and 4 GPOs.

##### Scenarios

Useful for IP access to consoles without IP connectivity, workstations, and journalist booth consoles.



#### NETBOX 4 MH

Allows connection to the audio network via IP up to 4 input channels for microphone or analog line and 4 output channels, for stereo headset and analog line. Incorporates 4 GPIs and 4 GPOs. It has additional GPIOs for signaling terminals such as Studiobox. It can be powered by PoE.

##### Scenarios

Radio booths, journalist booths, connections in the mixed area of sports events. Pre-amplifier for microphones.

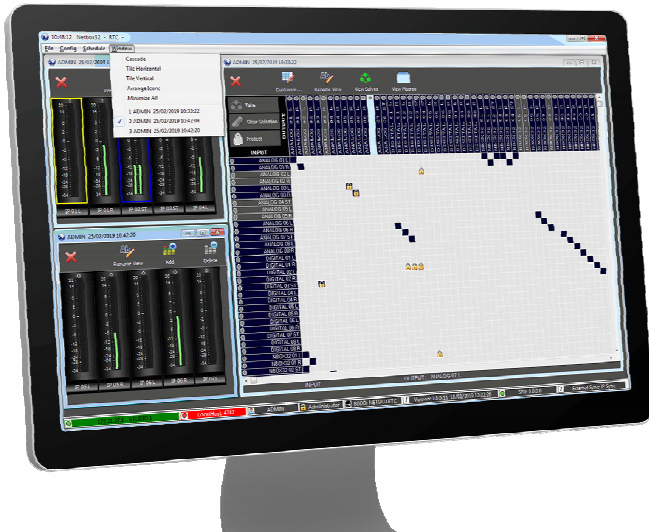
#### STUDIOBOX

Desktop signaling terminal. Interact with a digital console directly or through NETBOX 4MH. With "Ready" and "On Air" lights and cough cut buttons, remote PFL and 5 configurable buttons.





# X\_CORE/ Netbox DSP/ Netbox 32 AD MX



## Audio matrices with AoIP connectivity

**Scenarios of use:**  
 Especially suitable for switching the air signals and the distribution of audio inputs and outputs from the studios, in central control rooms, dispatch rooms and other technical spaces.



**X\_CORE**

Mixing, processing and distributing audio matrix, up to 5120 x 5120 circuits, for broadcast. Fully modular and redundant. Its inputs and outputs are through cards of different types in flexible quantities: digital AES / EBU, analog line, microphone and headphones, long-distance dark fiber optic links, in 64-channel MAD1 format and, proprietary fiber links with more 1000 channels, among others.

In addition, through AoIP cards with 64 inputs and outputs, we can include audio inputs and outputs from equipments with Dante™-AES 67 protocols, in the IP matrix. An X\_CORE frame can incorporate as many AoIP cards as necessary, and these can be installed in one or several Gigabit Ethernet networks.

Mixing, processing and distributing audio matrix. Versions with 64, 96, 128 and 160 audio inputs and outputs to the Dante network. Mix combinations of Dante network inputs over any of its up to 160 outputs to the Dante network. 64 inputs can be processed and returned to one output, or they can be added to any other existing output. They also incorporate 16 GPIs and 16 GPOs. As all its inputs and outputs are on the Dante network, to obtain analog or digital inputs and outputs, it must be accompanied by audio interfaces, audio consoles, or other equipment with Dante connectivity. A large matrix in only 1UR in size.

**NETBOX DSP**



**NETBOX 32 AD MX**

Mixing, and distributing audio matrix of 64 x 64 circuits. Able to mix combinations of its 16 analog, 16 digital and 32 inputs from the Dante IP network over any of its 64 outputs (16 analog, 16 digital and 32 IP). It also incorporates 16 GPIs and 16 GPOs. Perfect for medium and small installations.



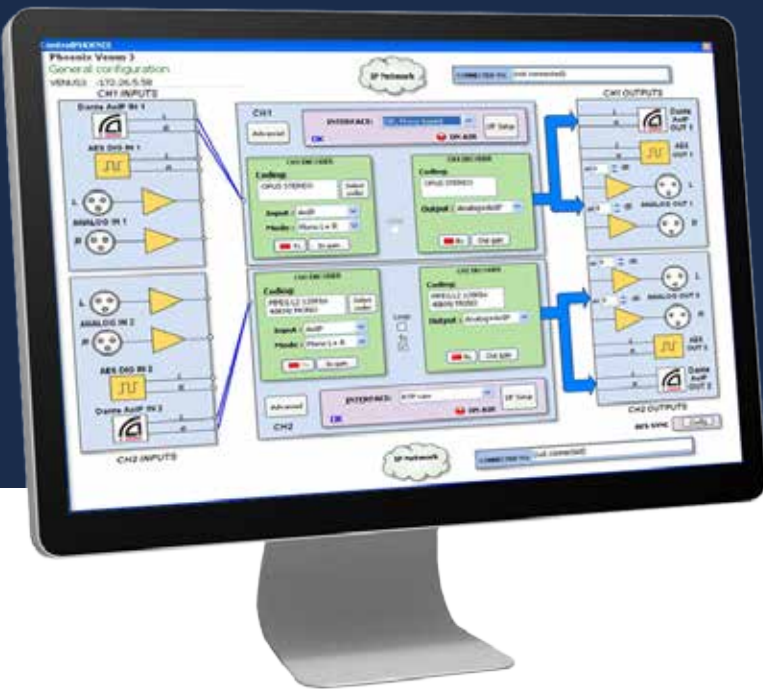
AEQ has a range of both portable and stationary audiocodes, compatible with most third-party codecs, over IP and ISDN interfaces.

## CONTROL SOFTWARE

With the ControlPhoenix AudioCodecs Management software, TOTAL CONTROL is available.

This application allows to identify all the audiocodes of the Phoenix family of a local network to control them in a coordinated way from a PC or group of PCs. Remote equipment can also be controlled through the internet, thus allowing an integral management of the communications network.

For each codec there is a very friendly graphic window for configuration and another for operation. In addition, there is a summary window in which the general status of all system codecs is displayed.



There are three versions: a free one in which two audiocodes are shown per screen, another one in which all the codecs of a system or fleet are controlled from the same screen, and a third one in which, in a broadcasting network, the distribution of programs and contributions from affiliated stations, are managed, automatically or manually, with the support of an audio matrix.

## ALGORITHM AND COMPATIBILITY

The AEQ audiocodec can be connected with third-party equipment through the SIP communication protocol, in accordance with the N / ACIP standards of the EBU TECH 3326.

In addition, if they connect with an AEQ codec, they can use an exclusive set of communication and control assistance tools for the unit. Among them, the Smart RTP communication establishment system, which facilitates the connection with compatible stationary codecs, avoiding the need to make or hang up the call, or specify the coding modes manually.

In addition to the algorithms prescribed in N / ACIP, they incorporate a selection of OPUS encoding algorithms that guarantee high quality audio with low delay, as well as G711, G722, MP2, AEQ-LD, PCM, among others. Optionally they can also include some AAC algorithms.





# Phoenix Stratos



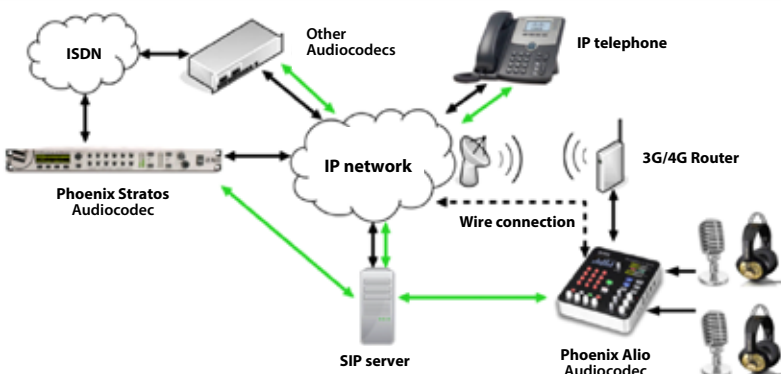
## Double stereo full duplex stereo audiocodex with IP, ISDN and X21 / V35 connectivity with front control panel

- Multi-format connectivity: in addition to IP networks, it allows the use of ISDN lines and X21 / V35 links.
- Simple and intuitive operation: It has a physical user interface on the front panel, as well as software control.
- High performance and reliability. Dual AC power supply.
- It allows two full duplex independent stereo / dual or four mono connections to two different destinations.
- Double channel totally independent for program and coordination or backup with their respective returns.
- Controllable through a simple user interface on PC that allows the local or remote management of one or more computers.
- It has a continuous data channel. It carries auxiliary data for remote equipment control.
- Remotely monitored: includes SNMP server that allows viewing its status and alarms.
- The equipment has two pairs of balanced analogue audio inputs and outputs at line level, duplicated with AES / EBU digital audio inputs and outputs.
- It has 4 GPIs and 4 GPOs as general purpose inputs and outputs for signalling and control.



## Scenarios of use:

- STL links (Studio Transmitter Link).
- Broadcasting networks.
- Contribution from outside the station.





# Phoenix Venus 3



## Dual stereo full duplex IP stationary audio codec, with analogue, digital and AoIP Dante™ local connectivity

- Performance and reliability "carrier grade" for the most demanding applications
- It has two AC power supplies, optionally AC / DC or DC / DC 48V.
- Double IP network connection allows independent connection of the internal LAN network from the external WAN or Internet
- It allows two independent stereo / dual or four mono full duplex connections to two different destinations.
- Double channel totally independent for program and coordination or backup with their respective returns.
- Controllable through a simple user interface on PC that allows the local or remote management from one or more computers.
- It has a double continuous channel of data for remote control of equipment, independent for each audiocodex.
- Remotely monitored: includes SNMP server that allows viewing its status and alarms.
- The equipment has two pairs of balanced analogue audio inputs and outputs at line level, duplicated with AES / EBU digital audio inputs and outputs. In addition, the equipment can optionally include local audio connectivity over IP, with Dante™ technology, activated by license.
- It has 4 GPIs and 4 GPOs as general purpose inputs and outputs for signalling and control.



### Scenarios of use:

- STL links (Studio Transmitter Link).
- Broadcasting networks.
- Contribution from outside the station.
- Audio link between remote intercom panels.





# Phoenix Mercury



## Stereo and bidirectional IP stationary audiocoder, that allows stereo / dual or mono connections

- Small format for desktop or rack (two devices can be installed in a 19" rack unit).
- It allows a full duplex stereo / dual or two mono connection to the same destination.
- Single channel for program with its return.  
Controllable through a simple user interface on PC that allows the local or remote management from one or more computers.
- It has a continuous data channel. It carries auxiliary data for remote equipment control.
- Remotely monitored: includes SNMP server that allows viewing its status and alarms.
- Balanced analogue audio inputs and outputs at line level. Optionally you can incorporate AES / EBU digital audio inputs and outputs.



## Scenarios of use:

- STL links (Studio Transmitter Link).
- Broadcasting networks.
- Contribution from outside the station.
- Digital hybrid for IP telephony.



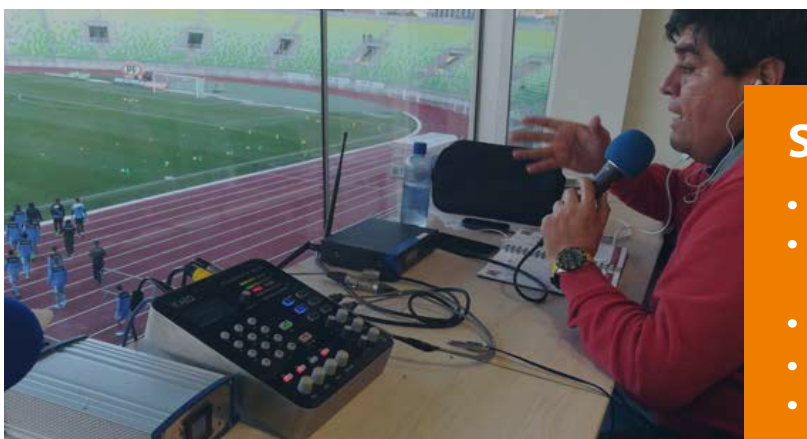


# Phoenix Alio



## Audiocodex portable IP stereo for outside broadcasting, optimized for outdoor use

- Designed and optimized for easy use in the most diverse broadcasting environments, including music events.
- Shock and splash resistant finish. It is also delivered with a carrying bag.
- Portable mixer with four microphone inputs with switchable Phantom power. Two line inputs and outputs. Two headphone outputs. Volume control and TX / RX mixing. Individual bass and treble control setting for each input channel.
- Full duplex communication, with a bidirectional stereo channel. Software-activated option of a second bidirectional stereo channel for technical coordination or backup.
- Front panel interface with keyboard and encoders. Graphic display and two LED precision VUmeters on the front panel.
- 12V DC power. External UPS option. Autonomy of more than 2 hours.
- Complete remote control application, not only with the connectivity functions, it also allows remote operation of the mixing and routing functions of the front of the equipment, in order to help or even replace the user.
- HELP button to request remote help from the technician in the studio.



### Scenarios of use:

- OB Contributions.
- Usable in OB operations by non-technical staff.
- Remote broadcasting of events.
- Sports Commentary.
- Off tube booths console.





# System IP



## Talk-Show and multi-conference call system

Allows IP calls to be introduced into the ON AIR program, from IP telephony providers, IP PBX, or even audiocodes, or ISDN and conventional PSTN lines. AEQ SYSTEL-IP offers great economic savings in communication costs and very remarkable improvement in the audio quality of connections. Essential for the Talk Show.

It dynamically distributes its 16 lines between 4 studios.

The operation allows, among other actions: dialing or picking up calls, putting them on hold or CUE, control the sending and return levels, routing them to auxiliary circuits, sending them to onair, block them onair, or hang them. You can choose between operating in the form of call queues or several simultaneous connections onair with groups.

The system is basically composed of:

### SYSTEL IP 16 "Engine"



With 1RU for 16 simultaneous IP telephone lines, 4 additional lines for operator IP phones, 4 digital inputs / outputs, 2 analog inputs / outputs and 32 Dante™-AES67 protocol AoIP inputs / outputs, works with up to 4 studios.

### Control Software Applications



**SYSTEL IP ORIGINAL**, consists of a PC control application and a conventional IP phone.



**SYSTELSET+**, is a special IP phone with a touch screen for control.

## Scenarios of use:

- Broadcast telephony.
- Conference calls in the air.
- Multiple commentators connections.
- Talkshow.
- Technical coordination.
- IP hybrid mode with multi-line and multi-studio possibilities.

## Telephone Hybrids



In addition to the latest IP telephony systems, AEQ offers digital telephone hybrids to incorporate calls from conventional telephone lines into radio programs with the highest audio quality.



# Visual Radio



## Automatic generation of visual content for radio

Visual radio generates visual content that accompanies the radio program for broadcast, both in internet environments and in traditional broadcasting. The system allows working with SDI cameras that offers HD video quality.

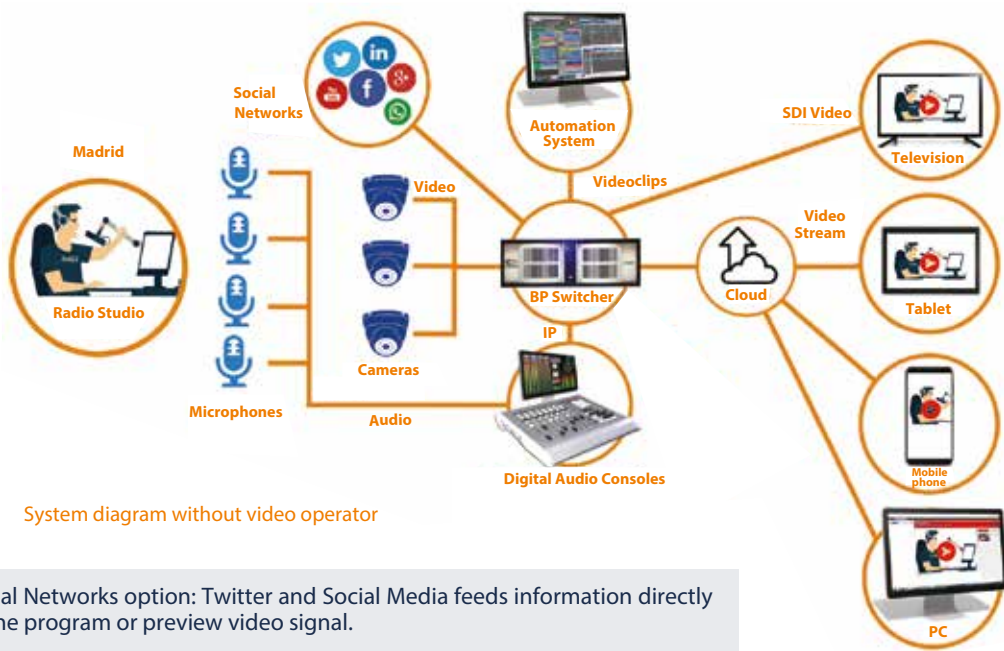
The generation of these contents is increasingly demanding and looks similar to the production of a TV channel itself. However, the difference between TV channels and the production for Visual Radio, is that in radio there is usually no dedicated staff to the realization and production of video.

BROADCAST PIX automatic video production systems are integrated with AEQ AoIP mixers and Netbox interfaces, which act as a source of commands and voice control for Broadcast Pix video switches and camera controls.

AEQ audio mixers and interfaces, determine in which microphone there is audio, and integrated with PTZ cameras, which collect the images of what is happening in the studio, so together with the Broadcast Pix video switcher, enable manual, or automatic and unattended, realization of the video, detecting the voice of microphones connected to AEQ digital audio mixers or AoIP interfaces.

### Scenarios of use:

Automatic generation of visual content of radio programming to simultaneously broadcast on the web and applications for PCs, mobile devices, and television channels.



System diagram without video operator



Social Networks option: Twitter and Social Media feeds information directly to the program or preview video signal.



# AudioPLUS



## Automation system for audio production and audio broadcast for radio and TV

Automation software with Playout, automatic editing and programming of radio and TV audio broadcast. Providing analog connectivity, digital AES, digital USB and AoIP protocol Dante™ - AES 67.

It incorporates tools for manual, automatic and remote control broadcasting, automatic music programming and advertising, as well as content generation and editing.

### Features:

- Intuitive user-oriented software with very friend GUI.
- System of automatic programming of music and advertising: hourly, daily, weekly and monthly.
- Automatic unattended playout system.
- Graphic edition of transition between music and talk-overs.
- Manual playout system by list and by instant key in jukebox mode.
- Compatibility with physical sound cards, USBmodules and "Dante Virtual Soundcard" application.
- Stereo Audio editor.
- It includes by default external editor Audicity and link for other high level audio editors, and optionally the multitrack AEQ Power Editor.
- Up to 4 stereo audio program + CUE in one PC.
- Editing and broadcasting of texts with embedded audio.
- Import and export of audios in many different file formats.
- Support for remote telecontrol and orders.
- Compatibility with advertising management systems, music programming, content extraction, and legal copy.
- Software license control.

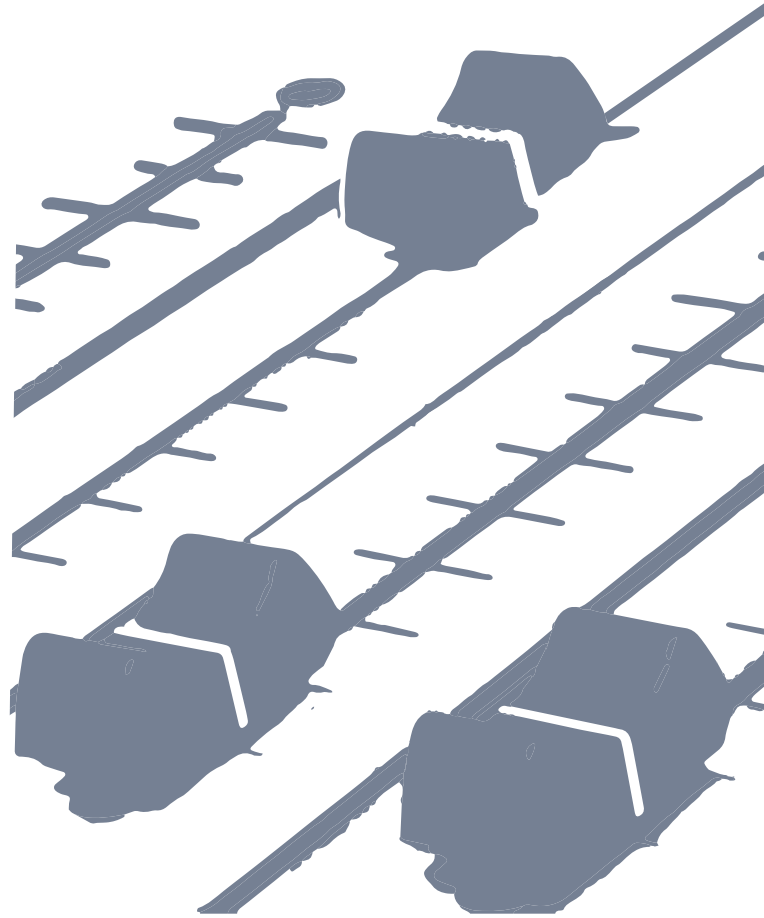
### Scenarios of use:

- Manual and automatic radio broadcasting support .
- Audio recording and editing.
- Musical programming
- Advertising management
- Radio stations remote control.
- Continuity recording and legal copy.
- News creation and programming.





# WE ARE CRAZY ABOUT RADIO



CAT.RADIO.20\_01

## **AEQ - HEADQUARTERS**

Margarita Salas, 24  
28919 Leganés · Madrid · España  
Tel.: +34 91 686 13 00  
Fax: +34 91 686 44 92  
website: [www.aeq.eu](http://www.aeq.eu)  
e-mail: [aeqsales@aeq.es](mailto:aeqsales@aeq.es)

## **AEQ - CATALUNYA**

Tel.: +34 93 414 03 96  
e-mail: [nolivella@aeq.es](mailto:nolivella@aeq.es)

## **AEQ - PORTUGAL**

Tel.: +35 1 261 101 874  
e-mail: [apicarra@aeq.es](mailto:apicarra@aeq.es)

## **AEQ - INDIA**

Tel.: +91 987 363 32 11  
e-mail: [nirav@aeq.es](mailto:nirav@aeq.es)

## **AEQ - KROMA MEXICO**

Tel.: +55 54132716  
e-mail: [creyna@aeq.es](mailto:creyna@aeq.es)

## **AEQ - USA**

Tel.: +1 (954) 581 79 99  
e-mail: [sales@aeqbroadcast.com](mailto:sales@aeqbroadcast.com)